

Hordozható DVB-T/T2 DTV Analizátor

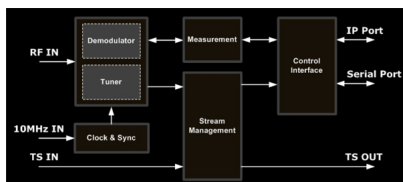


Standard DVB-T/H: EN 300 744, EN 302 304 DVB-T2: EN 302 755, TS 102 831, EN 102 773 RF Input 1xRF input-BNC-50? Input Sensitivity:-95dBm \pm 3dB Input Frequency: 48MHz - 862MHz Bandwidth: 6MHz, 7MHz, 8MHz TS Input 1xTS input, BNC female-50? Data Format: 188/188+8(+8)/204 bytes Burst or Packet mode, Bit Rate: 50Mbps max Demodulation Support Two Inputs: RF and TS Real-time demodulation and measurement process All DVB-T2 modes supported including Single & Multi-PLPs Transmission mode Monitoring, including FFT, GI, Constellation, Cell_ID, LDPC, etc. 1x PLP decoded at the same time Automatic L1-Signalling decoding Automatic constant rate TS output Null packet insertion RF Measurement Full band input level: -50dBm to -10dBm Channel Input level: -90dBm to -30dBm MER: up to 36 dB \pm 1dB Shoulders: > 44 dB SNR, Pre LDPC BER, Pre BCH BER, FER T2 symbols per T2 frame Tone Reservation, ISSY, PLP Id List Carrier Frequency Offset Measurement Display – Constellation – Signal Spectrum – Channel Impulse Response Monitoring Display – SFN Windows – Signal Power Bar Graph – Recovery Transmission Modes TS Measurement Stream management MPEG-TS Figures: TS_Sync, Continuity_count_error, PCR jitter, PCR repetition and PTS difference TS/ IP data rate TS Output TS output via ASI port, BNC female connector TS streaming over IP output, RJ-45 connector Control port Serial control protocol via RS-232/-485 TCP/IP control interface Via Ethernet Physical Supply voltage: AC 220V-DC 12V Adapter, 15W Aluminium package (224X378X266mm) Operating temperature range :0 ? to 50 ?

Rating: Not Rated Yet
[Ask a question about this product](#)

Description

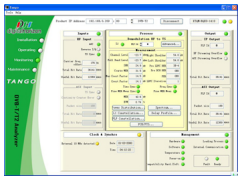
Block Diagram:



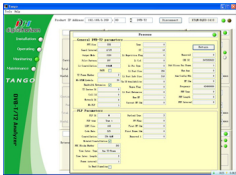
Configuration and Monitoring Screen:

-

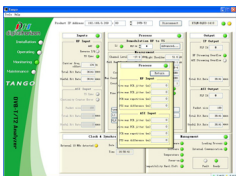
General Monitoring



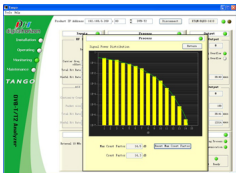
Advanced Monitoring



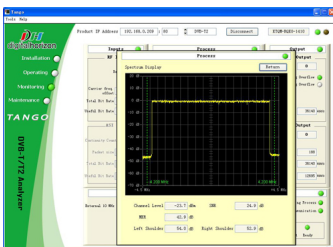
PCR/PTS Monitoring



Power Distribution Monitoring



Spectrum Analyzer



Constellation

